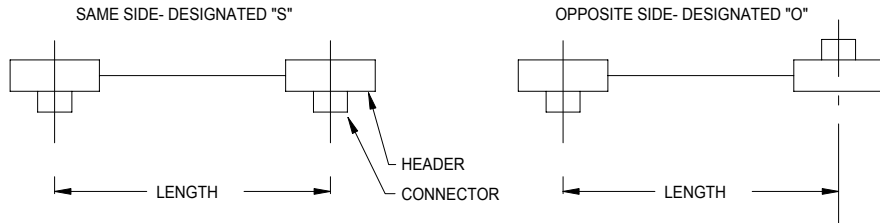
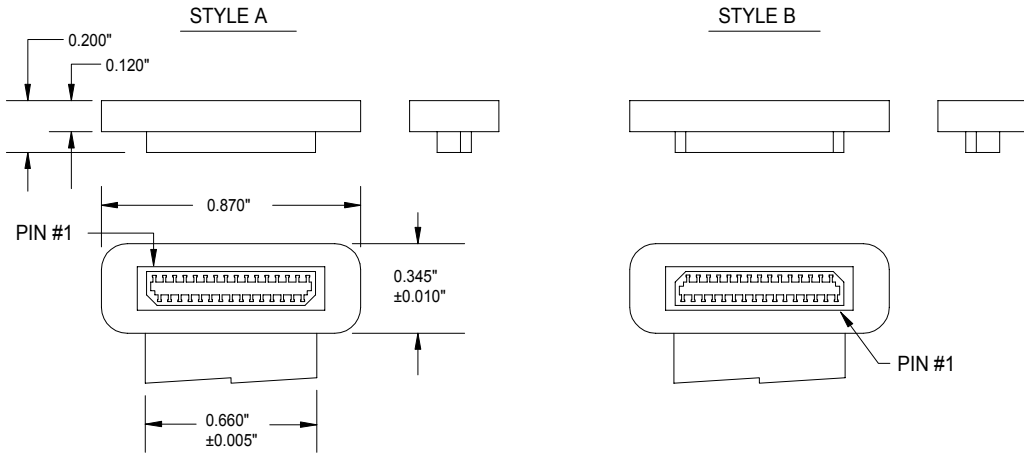


## RESPECTIVE END ORIENTATIONS



## CONNECTOR ORIENTATION WITH RESPECT TO CABLE

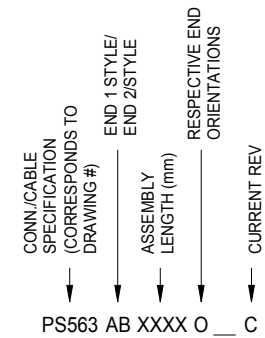


## NOTES

- 1) INSULATION: 0.002" THICK POLYESTER
- 2) CONDUCTORS: 0.003" X 0.011" (29 PLACES)  
0.003" X 0.026" (2 PLACES, OUTER)
- 3) HEADER MATERIAL: DUPONT 612 NYLON
- 4) CONNECTOR: HIROSE P/N DF9C-31S-1V
- 5) CABLE RATING: AWM STYLE 20890 105°C, 90V, VW-1
- 6) CABLE THICKNESS= 0.010"±0.002"
- 7) CABLE WIDTH= 0.660"±0.005"

REVISIONS			
LTR	DESCRIPTION	DATE	APPRVD
-	INITIAL RELEASE	1/5/98	
A	ADDED .345" DIMENSION TO HEADER	4/1/99	
B	CHANGED HEADER WIDTH FROM 1.00" TO 0.870" TO MATCH CURRENT PRODUCTION MOLDS	10/21/99	
C	ADDED EXAMPLE P/N	3/14/02	C.D.

## CREATING A PART NUMBER



i.e. PS563AA0254S C

EXAMPLE GIVEN INDICATES A 31 POS. CABLE ASSEMBLY TERMINATED WITH HIROSE CONNECTORS (P/N DF9C-31S-1V) IN WHICH PIN #1 TRACES TO PIN #1, ASSEMBLY IS 10.000" IN LENGTH, AND CONNECTORS ARE ON OPPOSITE SIDES OF CABLE AS DEFINED AT LEFT.

MATERIAL		<b>P</b> ARLEX CORPORATION 7 INDUSTRIAL WAY SALEM, NH 03079  LAMINATED CABLE DIVISION		
TOLERANCES	DR	C.Dobens	DATE	1/5/98
	CHK			
.XXX ± .XX ±	ENG	C.Dobens	DATE	1/5/98
	APPD			
ANGLES ±				
		END DETAILS FOR TERMINATING CABLE WITH 31 POS. S/M HIROSE CONNECTORS	SIZE <b>B</b>	FSCM <b>18377</b>
			<b>PS-563</b>	REV <b>C</b>
		SCALE	2:1	SHEET 1 OF 1